

SM-8000T TERMINAL INSERTION MACHINE

Machine Description

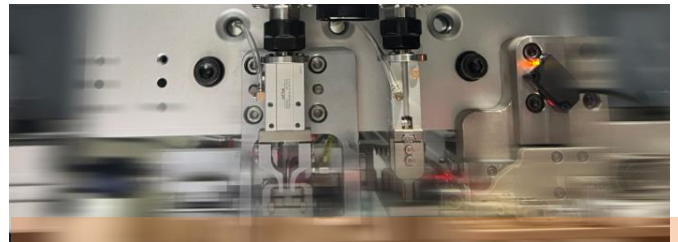
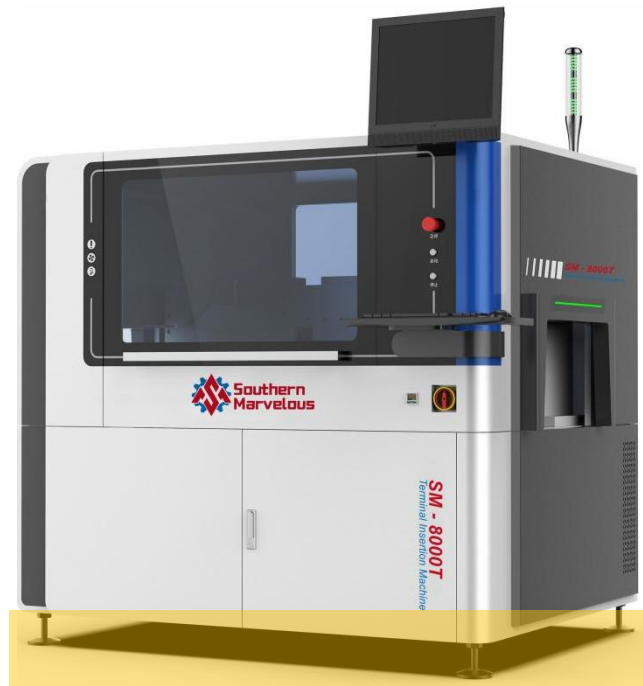
- Automatic pin insertion machine for the application of reeled pins, tabs/fastons, receptacles, and similar products into PCBs
- Flexible and fully automatic insertion machine Available either as stand-alone unit or integrated into a production line
- For mid and high-volume level production
- Up to 4 insertion heads
- English, Chinese Machine Menus
- A Microsoft Windows Interface

Standard Features

- Cylinder-driven base insertion head(6000CPH)
- World-class reliability(1000ppm)
- Freely programmable insertion angle (rotation having no influence on insertion rate)
- Panasonic Servo Motors
- Adjustable PCB support to provide production Flexibility
- Lower support tool equipped with pin presence check
- Clinching in lower tooling possible
- screen controlled by keyboard and mouse allowing simple programming
- Manual PCB/panel loading
- Optical Vision
 - CAD Data Driven / Compatible
 - Self-Teach Programming
 - Excel Compatible
 - Full-Screen Editor
 - I/O Diagnostics
 - Optical Insertion Hole Correction
 - Multi-Level Password Security

Quality Management

- Fulfilling Industry 4.0 requirements
- Customized MES solutions
- Pass the IPC-9704 stress test standard (Insertion Force within $\pm 400\mu e$)
- Pin presence detection
- CCD Vision system for accuracy
- 3-5 days for delivery of consumable spare parts
- Software update



Options for SM-8000T

- Motor-driven base insertion head(15000CPH)
- Conveyor, worktable automatic width adjustment
- Customized MES solutions
- Max number of base tools and insertion heads: 1/2/3/4
- Inward clinching/Outward clinching/"N"
- Touch screen
- Optional Force Measurement Capability
- Inline Conveyor (SMEMA Compatible)
- Aspirators at Component Feed & Cut
- Material volume bar code scanning
- European Conformity "CE"

Application Industry

Home appliance industry

The car industry

The power industry

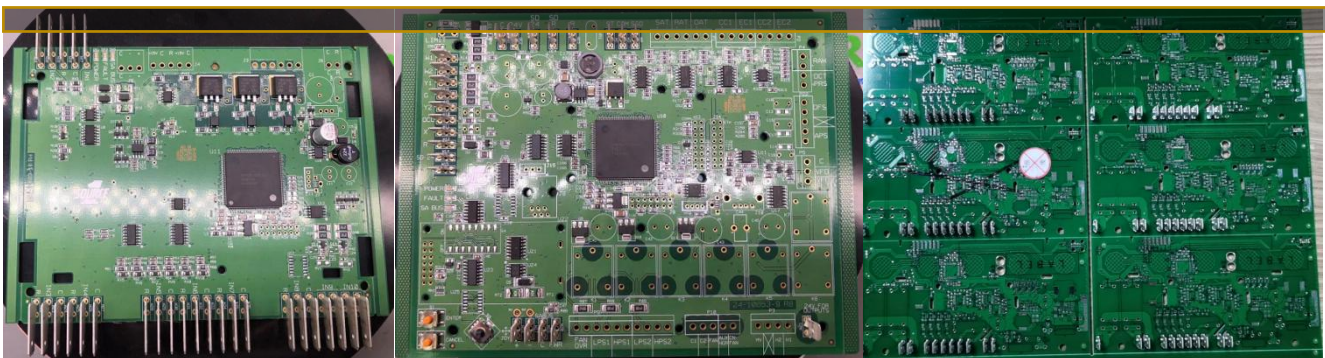
Other electronics industry: digital watches, electronic components, etc

Standard Machine Specification

Equipment size	1700mm*1300mm*1600mm (2 heads)
Packaging	Tape terminal, bulk terminal
Equipment weight	1200KG
PCB size	380mm*280mm (enlarged size can be customized)
Number of insertion heads	1-4 Optional
terminal thickness	≥0.5mm ≤1.2mm
Vertical error	≤0.8°
PCB requirements	The insertion hole is 0.5±0.1mm larger than the component foot
Insertion angle	360° (increment 1°)
Body distance	The distance between the components ≥2mm
Clinch	Inward clinching/Outward clinching/"N"
Humidity	30%-70%
Display system	17-inch color LCD monitor
Feeding system	Tape feeder or Bowl feeder + feeding guide
Motion accuracy	0.001mm/pulse
Motion system	Panasonic controller, motor
Programming function	Online visual programming, visual correction, EXCEL
Data import	USB interface import, manual entry
Communication interface	RS-232C (can be connected to MES system)
Power	Single 220V/AC, 50/60HZ, 2KVA



The expert of through-hole automation



Contact Shenzhen, China:

Ronin Xiao

Email: ronin@aoligeismt.com

TEL :+86 13691623214

Mexico office:

Agustin Marcelino Córdova

Email: agustin.marcelino@solucinde.com

TEL: +52 899 2196674